

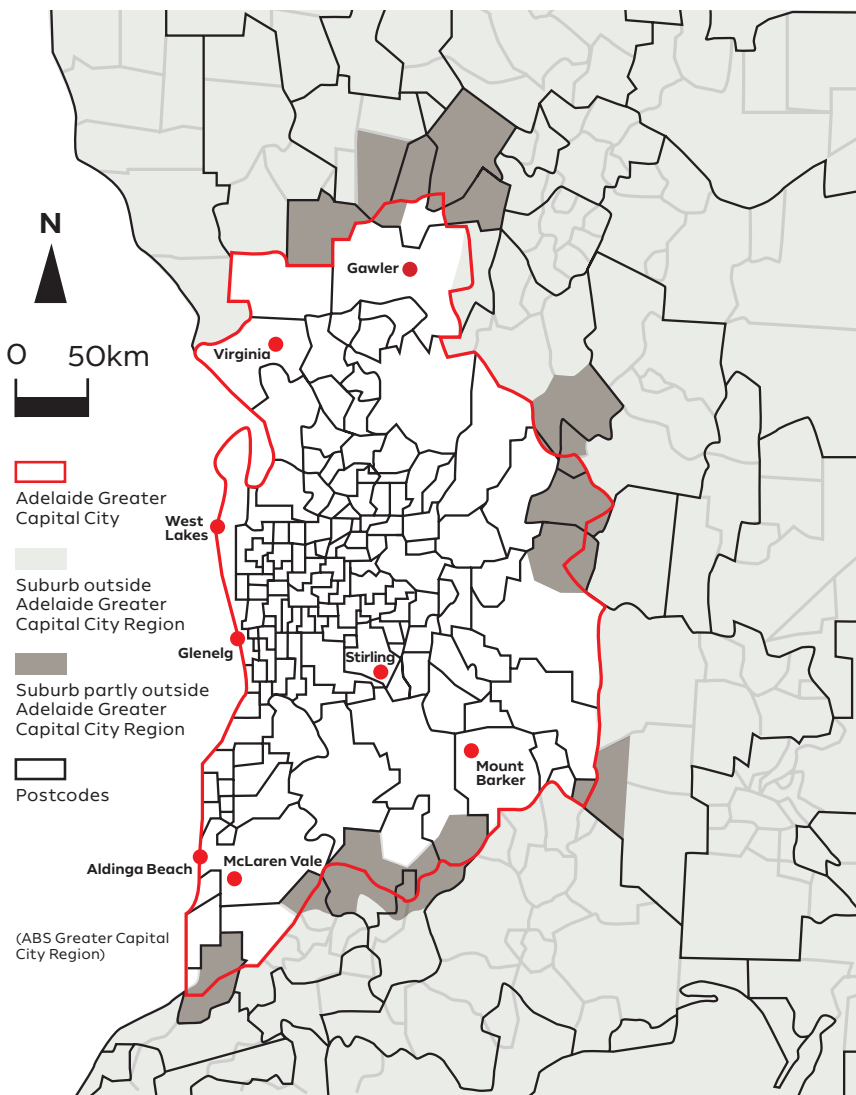


# Regional South Australia definition

(also called Outer Regional South Australia)

Regional South Australia is all postcodes and suburbs not included or partly included in the ABS greater Adelaide definition. The post codes listed below are included within this definition are able to access state nomination regional/ requirement concessions.

Towns that **do not** meet this definition include Mount Barker, Stirling, Gawler, Virginia and McLaren Vale.



5153	5276	5374	5501	5651
5157	5277	5381	5502	5652
5172	5278	5400	5510	5653
5174	5279	5401	5520	5654
5201	5280	5410	5521	5655
5202	5290	5411	5522	5660
5203	5291	5412	5523	5661
5204	5301	5413	5540	5670
5210	5302	5414	5550	5671
5211	5303	5415	5552	5680
5212	5304	5416	5554	5690
5213	5306	5417	5555	5700
5214	5307	5418	5556	5701
5220	5308	5419	5558	5710
5221	5309	5420	5560	5713
5222	5310	5421	5570	5715
5223	5311	5422	5571	5717
5234	5320	5431	5572	5719
5235	5321	5432	5573	5720
5236	5322	5433	5575	5722
5237	5330	5434	5576	5723
5238	5331	5440	5577	5724
5244	5332	5451	5580	5725
5253	5333	5452	5581	5730
5254	5340	5453	5582	5731
5255	5341	5454	5583	5732
5256	5342	5455	5600	5733
5259	5343	5460	5601	5734
5260	5344	5461	5602	5715
5261	5345	5462	5603	5717
5262	5346	5464	5605	5719
5263	5351	5471	5606	5720
5264	5352	5472	5607	5722
5265	5353	5473	5608	5723
5266	5354	5480	5609	5724
5267	5355	5481	5630	5725
5268	5356	5482	5631	5730
5269	5357	5483	5632	5731
5270	5360	5485	5633	5732
5271	5362	5490	5640	5733
5272	5371	5491	5641	5734
5273	5372	5493	5642	
5275	5373	5495	5650	

For further information, please contact us at: Skilled & Business Migration. GPO Box 320, Adelaide SA 5001, Australia.

**Please Note:** Any information about the law in Australia or South Australia is provided as general information only and is not legal advice. This fact sheet is a starting point only and is not a substitute for legal or professional advice. While the Department has attempted to ensure the information is accurate at the time of publishing, no responsibility will be accepted for any errors or omissions and the Government of South Australia will not be liable for any loss or damage incurred by any person as a consequence of any use, reference or reliance on this information. Any such use, reference or reliance shall be at the sole risk of that person who should seek their own legal and or/professional advice if required.

Last updated: September 2020